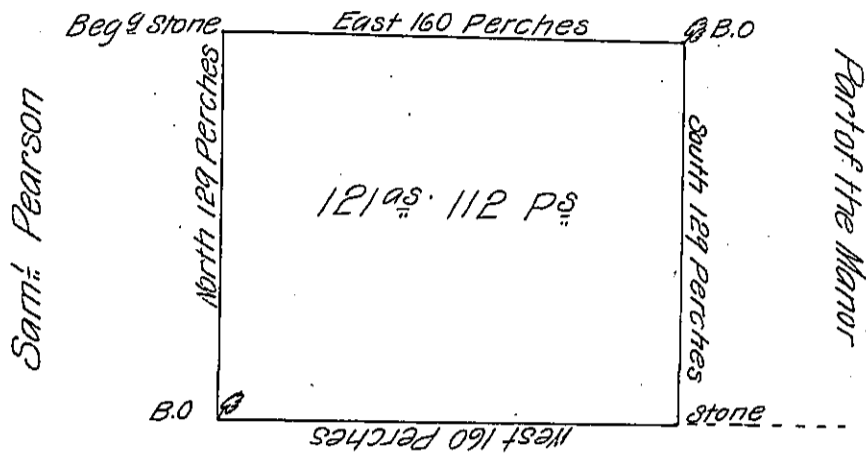


Part of the Manor



Exd. Jno Lukens

other land of Hugh Foulk

By the direction of the Hon<sup>ble</sup> the Proprietaries I have Surveyed  
 to Hugh Foulk the above described, on the 16 day of December 1740. Situate in  
 Richland Manor in the County of Bucks. Contain<sup>g</sup> one hundred twenty one acres  
 and 112 perches.

Nich<sup>o</sup> Scull

IN TESTIMONY that the above is a copy of the original remaining on file in  
 the Department of Internal Affairs of Pennsylvania, made  
 conformably to an Act of Assembly approved the 16th day of  
 February, 1833, I have hereunto set my Hand and caused  
 the Seal of said Department to be affixed at Harrisburg,  
 this fourth day of May 1906

*Geo. R. Brown*  
 Secretary of Internal Affairs.